

ALBANY POLICE DEPARTMENT CRIME ANALYSIS

“Combating Crime and Protecting Lives”

Prepared By the Crime Analysis Unit of The Albany Police Department

****These numbers may be updated from month to month as records updates occur****

2013

Month of January

Distribution: CITY MANAGER, ASST. CITY MANAGERS

CHIEF OF POLICE
DEPUTY CHIEF - INVESTIGATIVE
DEPUTY CHIEF – UNIFORM
DEPUTY CHIEF – SUPPORT SERVICES
MAJOR - INTERNAL AFFAIRS
INVESTIGATIONS CAPTAINS
UNIFORM CAPTAINS
ACCREDITATION MANAGER

SPECIAL OPERATIONS CAPT.
FAMILY PROTECTION
RECORDS SUPERVISOR
PLANNING & RESEARCH
TRAINING SUPERVISOR
CHIEF'S ADMIN ASSISTANT
SUPPORT SERVICES LT

***Information Included in this Report Reflects
Compliance with UCR Reporting Standards**

The information contained in this report is primarily raw data until calendar year reporting.

Please contact David Sparks, APD Crime Analyst for questions regarding this report @ 431-2878.

Monthly Part I Crimes

Albany Police Department

Part I Crimes Committed During the Month of January 2013 with Comparisons of January 2012 & 2011

Actual Offenses	2013 Month to Month		2012 Month to Month		+/- Change		2013 Month to Month		2011 Month to Month		+/- Change	
Offenses Committed	January 2013	January 2012	#	%			January 2013	January 2011	#	%		
Homicide	0	0	0	*NC			0	1	-1	-100.00		
Rape	1	4	-3	-75.00			1	2	-1	-50.00		
Robbery	16	17	-1	-5.88			16	10	6	60.00		
Aggravated Assault	42	40	2	5.00			42	25	17	68.00		
Violent Crime Total	59	61	-2	-3.28			59	38	21	55.26		
Arson	2	3	-1	-33.33			2	1	1	100.00		
Burglary	103	123	-20	-16.26			103	112	-9	-8.04		
Larceny	314	269	45	16.73			314	228	86	37.72		
Auto Theft	12	24	-12	-50.00			12	14	-2	-14.29		
Property Crime Total	431	419	12	2.86			431	355	76	21.41		
Crime Trend Total	490	480	10	2.08			490	393	97	24.68		

Part I Case Clearances During the Month of January 2013 with Comparisons of January 2012 & 2011

	2013	2012	2011	2013	2012	2011
Offenses Cleared	January # Cleared	January # Cleared	January # Cleared	January % Cleared	January % Cleared	January % Cleared
Homicide	0	0	1	*NC	*NC	100.00%
Rape	2	2	3	200.00%	50.00%	150.00%
Robbery	7	4	0	43.75%	23.53%	0.00%
Aggravated Assault	20	22	14	47.62%	55.00%	56.00%
Violent Crime Cleared	29	28	18	49.15%	45.90%	47.37%
Arson	1	0	0	50.00%	0.00%	0.00%
Burglary	8	12	18	7.77%	9.76%	16.07%
Larceny	52	53	50	16.56%	19.70%	21.93%
Auto Theft	2	1	3	16.67%	4.17%	21.43%
Property Crime Cleared	63	66	71	14.62%	15.75%	20.00%
Clearance Total	92	94	89	18.78%	19.58%	22.65%

* The Crime Trend and Clearance Totals do not include percentages for numbers not divisible by 0.

Year to Date Part I Crimes

Albany Police Department

Part I Crimes Committed Year-to-date as of January 2013 with Comparisons of January 2012 & 2011									
Actual Offenses	2013 2012 Year to Date		+/- Change			2013 2011 Year to Date		+/- Change	
	January 2013	January 2012	#	%		January 2013	January 2011	#	%
Offenses Committed									
Homicide	0	0	0	*NC		0	1	-1	-100.00
Rape	1	4	-3	-75.00		1	2	-1	-50.00
Robbery	16	17	-1	-5.88		16	10	6	60.00
Aggravated Assault	42	40	2	5.00		42	25	17	68.00
Violent Crime Total	59	61	-2	-3.28		59	38	21	55.26
Arson	2	3	-1	-33.33	2	1	1	100.00	
Burglary	103	123	-20	-16.26	103	112	-9	-8.04	
Larceny	314	269	45	16.73	314	228	86	37.72	
Auto Theft	12	24	-12	-50.00	12	14	-2	-14.29	
Property Crime Total	431	419	12	2.86	431	355	76	21.41	
Crime Trend Total	490	480	10	2.08	490	393	97	24.68	

Part I Case Clearances Year-to-date as of January 2013 with Comparisons of January 2012 & 2011								
Offenses Cleared	2013	2012	2011		2013	2012	2011	
	January # Cleared	January # Cleared	January # Cleared		January % Cleared	January % Cleared	January % Cleared	
Homicide	0	0	1		*NC	*NC	100.00%	
Rape	2	2	3		200.00%	50.00%	150.00%	
Robbery	7	4	0		43.75%	23.53%	0.00%	
Aggravated Assault	20	22	14		47.62%	55.00%	56.00%	
Violent Crime Cleared	29	28	18		49.15%	45.90%	47.37%	
Arson	1	0	0		50.00%	0.00%	0.00%	
Burglary	8	12	18		7.77%	9.76%	16.07%	
Larceny	52	53	50		16.56%	19.70%	21.93%	
Auto Theft	2	1	3		16.67%	4.17%	21.43%	
Property Crime Cleared	63	66	71		14.62%	15.75%	20.00%	
Clearance Total	92	94	89		18.78%	19.58%	22.65%	

* The Crime Trend and Clearance Totals do not include percentages for numbers not divisible by 0.

Monthly Part II and Other Crimes

Albany Police Department

Part II Crime Comparison of January 2013 Data with Previous Year/Month									
Part II Crimes	January 2013	January 2012	+/- #	Change %		January 2013	December 2012	+/- #	Change %
Disorderly Conduct	46	61	-15	-24.59		46	65	-19	-29.23
Domestic Violence	154	158	-4	-2.53		154	170	-16	-9.41
Disorderly w/intoxicated	0	0	0	*NC		0	0	0	*NC
D.U.I.	7	10	-3	-30.00		7	12	-5	-41.67
Child Molestation	2	7	-5	-71.43		2	4	-2	-50.00
Cruelty to Child	3	8	-5	-62.50		3	4	-1	-25.00
Child Protec: Curfew	0	0	0	*NC		0	0	0	*NC
Child Protec:Truancy	0	1	-1	-100.00		0	0	0	*NC
Interfere w/Custody	0	1	-1	-100.00		0	0	0	*NC
Child Abandonment	0	0	0	*NC		0	0	0	*NC
Enticing a Child	0	0	0	*NC		0	0	0	*NC
Forgery	10	15	-5	-33.33		10	5	5	100.00
Noise Ordinance Viol.	0	1	-1	-100.00		0	0	0	*NC
Harassing Phone Calls	6	14	-8	-57.14		6	7	-1	-14.29
Loitering	2	3	-1	-33.33		2	1	1	100.00
Missing Persons	22	33	-11	-33.33		22	13	9	69.23
Runaway	1	0	1	*NC		1	1	0	0.00
Suicide	0	1	-1	-100.00		0	1	-1	-100.00
Underage Poss./Consum.	4	1	3	300.00		4	4	0	0.00
Criminal Damage	21	21	0	0.00		21	27	-6	-22.22
Theft: Gas Drive Off	1	3	-2	-66.67		1	1	0	0.00
Simple Assault	9	3	6	200.00		9	8	1	12.50
Simple Battery	87	75	12	16.00		87	89	-2	-2.25
Battery	33	31	2	6.45		33	30	3	10.00
Obstruct/Hinder Police	18	16	2	12.50		18	28	-10	-35.71
Sexual Battery	0	1	-1	-100.00		0	0	0	*NC
Open Container	9	7	2	28.57		9	13	-4	-30.77
Sodomy	1	2	-1	-50.00		1	1	0	0.00
Statutory Rape	1	0	1	*NC		1	1	0	0.00
Saggy Pants	7	38	-31	-81.58		7	6	1	16.67
All Cases Not Listed	488	512	-24	-4.69		488	489	-1	-0.20
Total Part II Crime	932	1023	-91	-8.90		932	980	-48	-4.90

** The Crime Trend and Clearance Totals do not include percentages for numbers not able to be divided by 0.

Year to Date Part II and Other Crimes

Albany Police Department

Part II Crime Comparison of 2013 Year to Date with Previous Years 2012 & 2011									
Part II Crimes	January 2013	January 2012	+/- #	Change %		January 2013	January 2011	+/- #	Change %
Disorderly Conduct	46	61	-15	-24.59		46	51	-5	-9.80
Domestic Violence	154	158	-4	-2.53		154	183	-29	-15.85
Disorderly wh/intoxicated	0	0	0	*NC		0	0	0	*NC
D.U.I.	7	10	-3	-30.00		7	21	-14	-66.67
Child Molestation	2	7	-5	-71.43		2	1	1	100.00
Child Cruelty	3	8	-5	-62.50		3	1	2	200.00
Curfew	0	0	0	*NC		0	2	-2	-100.00
Truancy	0	1	-1	-100.00		0	1	-1	-100.00
Interfere w/Custody	0	1	-1	-100.00		0	0	0	*NC
Child Abandonment	0	0	0	*NC		0	0	0	*NC
Enticing a Child	0	0	0	*NC		0	0	0	*NC
Forgery	10	15	-5	-33.33		10	10	0	0.00
Noise Ordinance Viol.	0	1	-1	-100.00		0	0	0	*NC
Harassing Phone Calls	6	14	-8	-57.14		6	7	-1	-14.29
Loitering	2	3	-1	-33.33		2	1	1	100.00
Missing Persons	22	33	-11	-33.33		22	28	-6	-21.43
Runaway	1	0	1	*NC		1	1	0	0.00
Suicide	0	1	-1	-100.00		0	1	-1	-100.00
Underage Poss./Consum.	4	1	3	300.00		4	4	0	0.00
Criminal Damage	21	21	0	0.00		21	27	-6	-22.22
Theft: Gas Drive Off	1	3	-2	-66.67		1	2	-1	-50.00
Simple Assault	9	3	6	200.00		9	19	-10	-52.63
Simple Battery	87	75	12	16.00		87	86	1	1.16
Battery	33	31	2	6.45		33	31	2	6.45
Obstruction of Officer	18	16	2	12.50		18	12	6	50.00
Sexual Battery	0	1	-1	-100.00		0	4	-4	-100.00
Open Container	9	7	2	28.57		9	17	-8	-47.06
Sodomy	1	2	-1	-50.00		1	0	1	*NC
Statutory Rape	1	0	1	*NC		1	0	1	*NC
Saggy Pants	7	38	-31	-81.58		7	2	5	250.00
All Other Cases	488	512	-24	-4.69		488	524	-36	-6.87
Total Part II Crime	932	1023	-91	-8.90		932	1036	-104	-10.04

** The Crime Trend and Clearance Totals do not include percentages for numbers not able to be divided by 0.

Monthly Part I Crimes by District

Albany Police Department

January 2013

West Actual Offenses			
Offenses Committed	January 2013	December 2012	Year to Date 2013
Homicide	0	0	0
Rape	0	0	0
Robbery	3	13	3
Aggravated Assault	6	4	6
Violent Crime Total	9	17	9
Arson	0	0	0
Burglary	29	32	29
Larceny	124	128	124
Auto Theft	5	5	5
Property Crime Tot.	158	165	158
Crime Trend Total	167	182	167

Central Actual Offenses			
Offenses Committed	January 2013	December 2012	Year to Date 2013
Homicide	0	0	0
Rape	0	0	0
Robbery	9	5	9
Aggravated Assault	24	12	24
Violent Crime Total	33	17	33
Arson	2	0	2
Burglary	21	23	21
Larceny	103	77	103
Auto Theft	3	4	3
Property Crime Tot.	129	104	129
Crime Trend Total	162	121	162

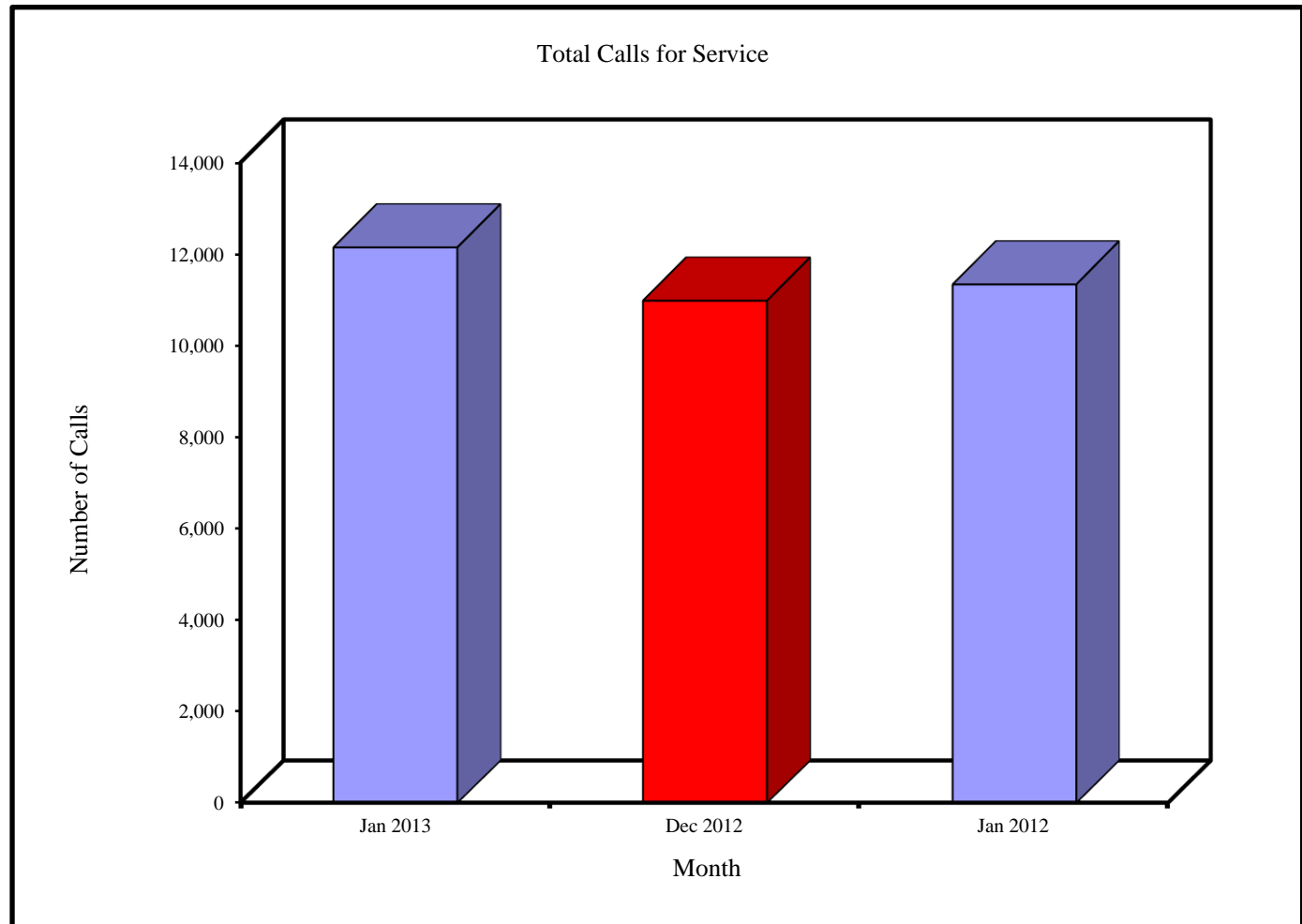
East Actual Offenses			
Offenses Committed	January 2013	December 2012	Year to Date 2013
Homicide	0	0	0
Rape	1	3	1
Robbery	4	5	4
Aggravated Assault	12	15	12
Violent Crime Total	17	23	17
Arson	0	0	0
Burglary	53	34	53
Larceny	87	74	87
Auto Theft	4	7	4
Property Crime Tot.	144	115	144
Crime Trend Total	161	138	161

Monthly Total Calls for Service

Albany Police Department

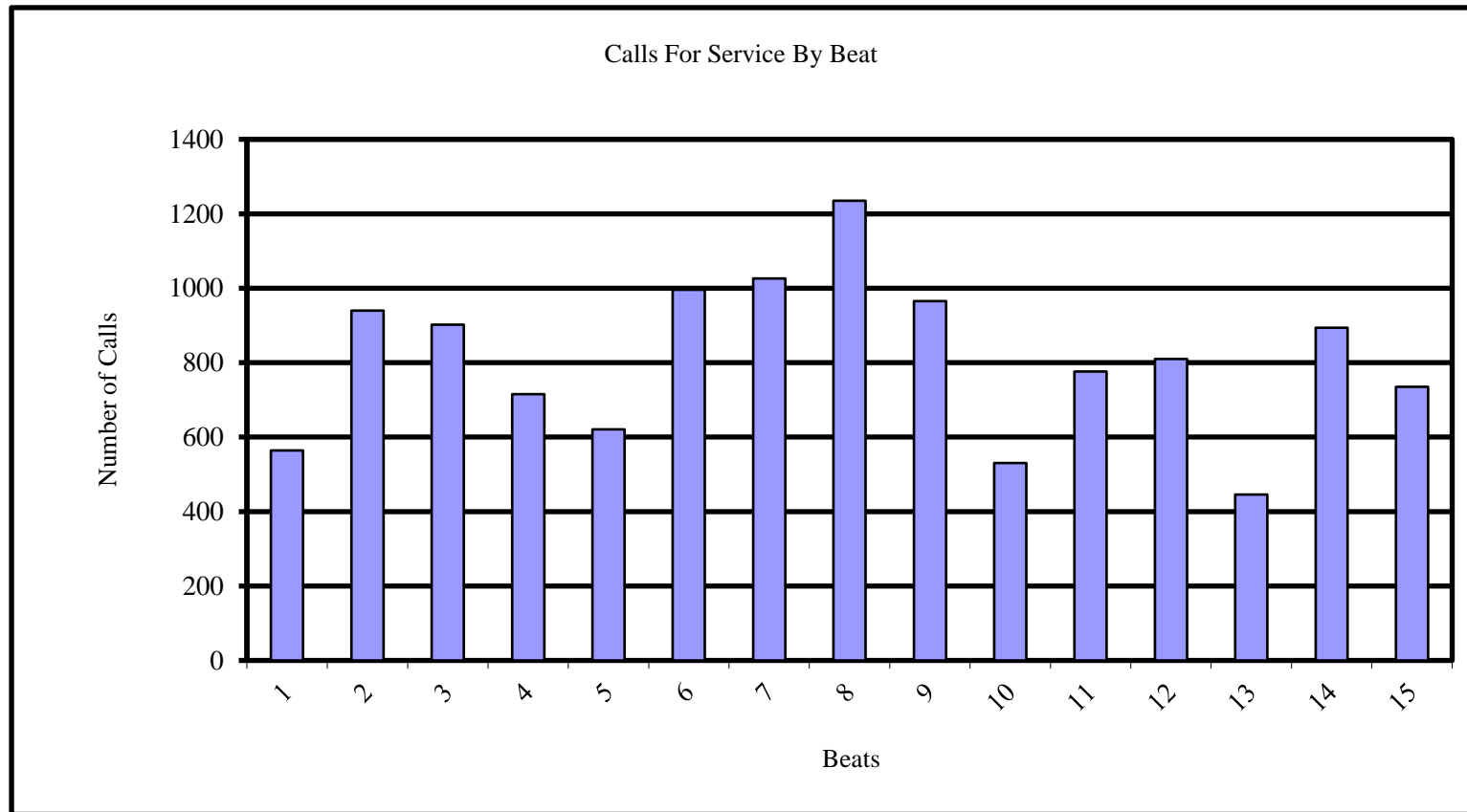
Total Calls For Service

Jan 2013	Dec 2012	Jan 2012
12,155	10,997	11,350



Monthly Calls for Service by Beats

Albany Police Department

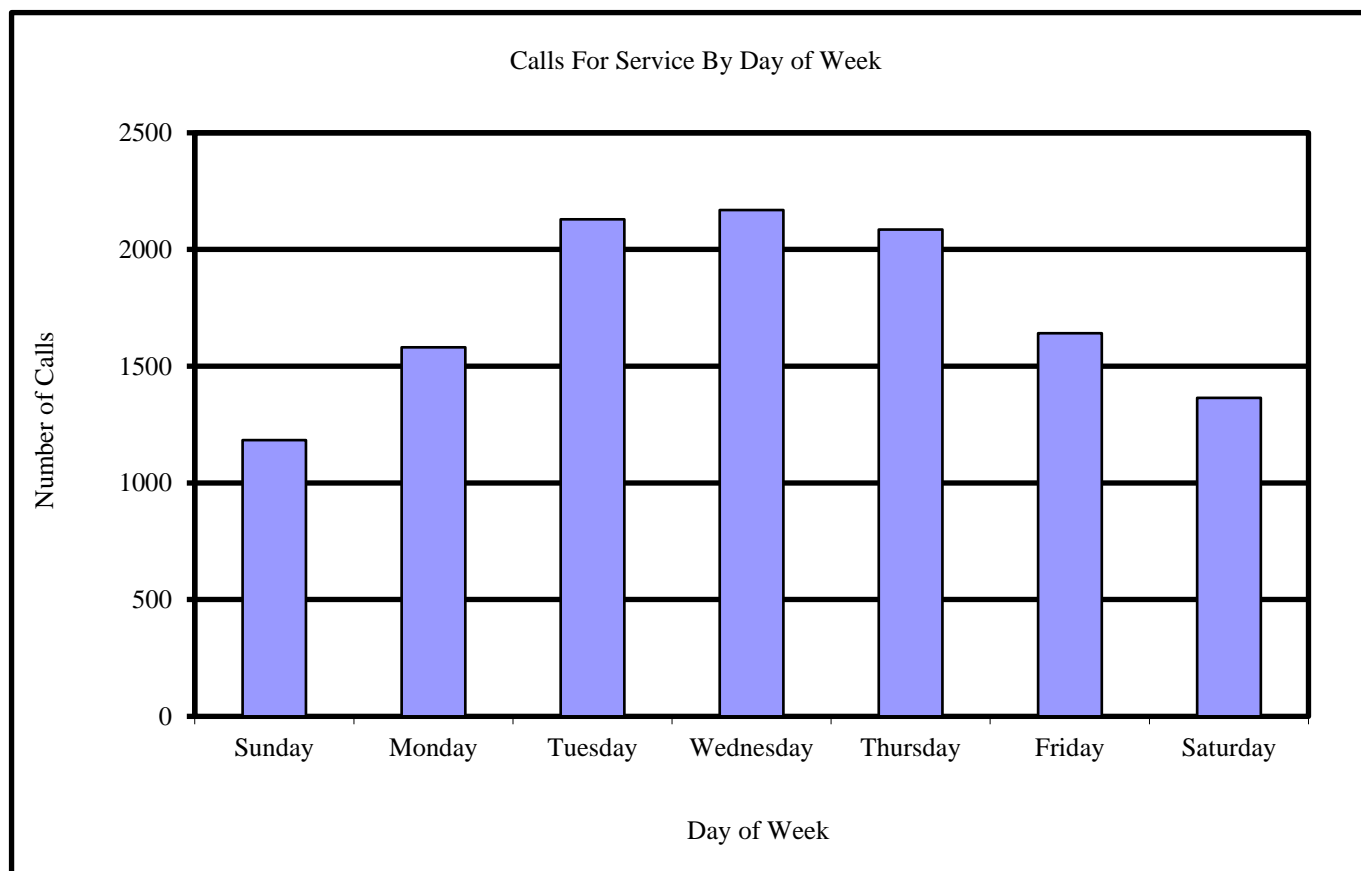


Beats	1	2	3	4	5	6	7	8	9	10	11	12	13	14	15
Calls in January 2013	564	940	902	715	621	996	1026	1235	965	530	776	810	446	894	735

Monthly Calls for Service by Day of Week

Albany Police Department

<u>Calls For Service</u>	
Day	January 2012
Sunday	1184
Monday	1581
Tuesday	2129
Wednesday	2169
Thursday	2086
Friday	1641
Saturday	1365
	<hr/> 12155

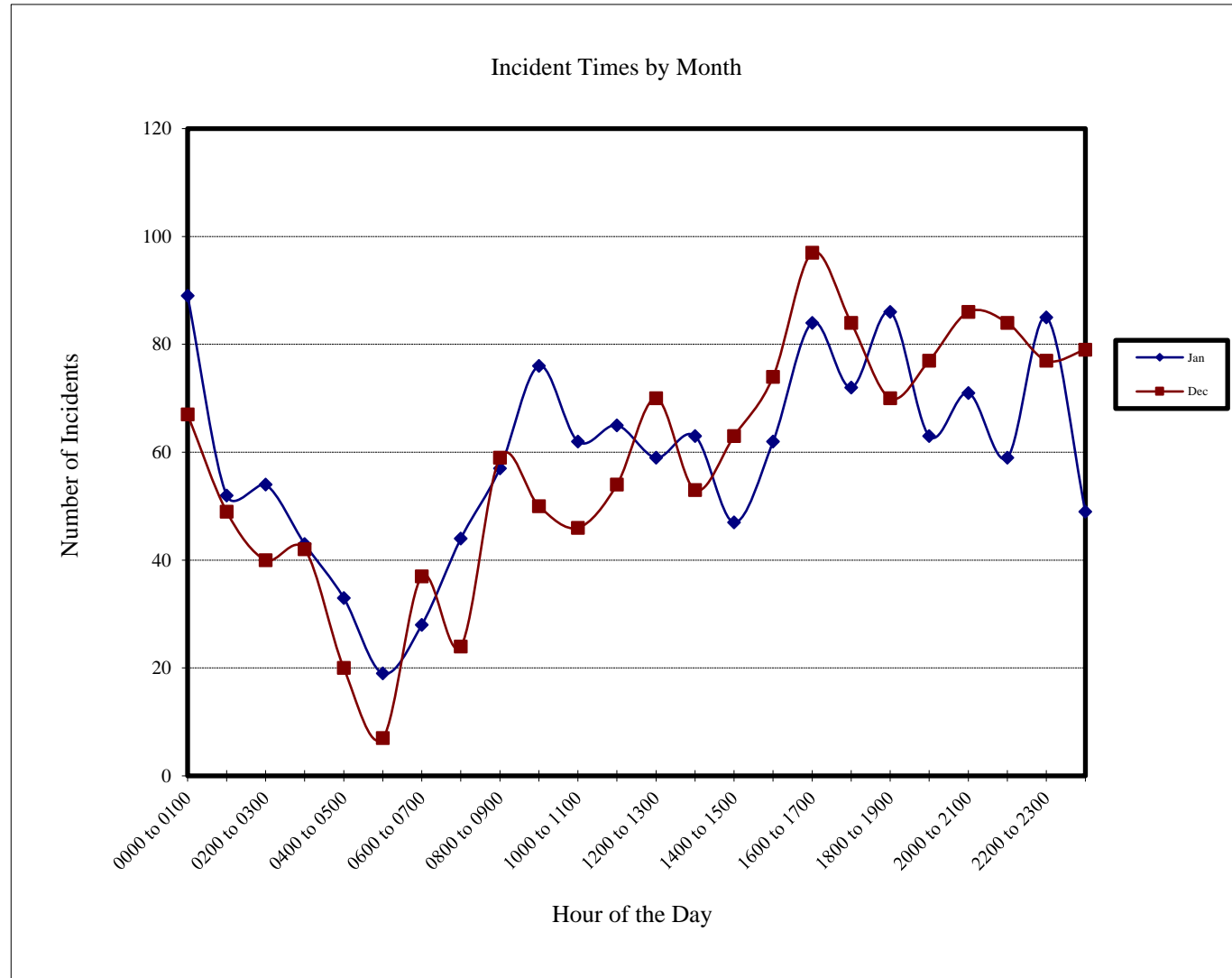


Incidents by Hour

Albany Police Department

Incident Times by Month

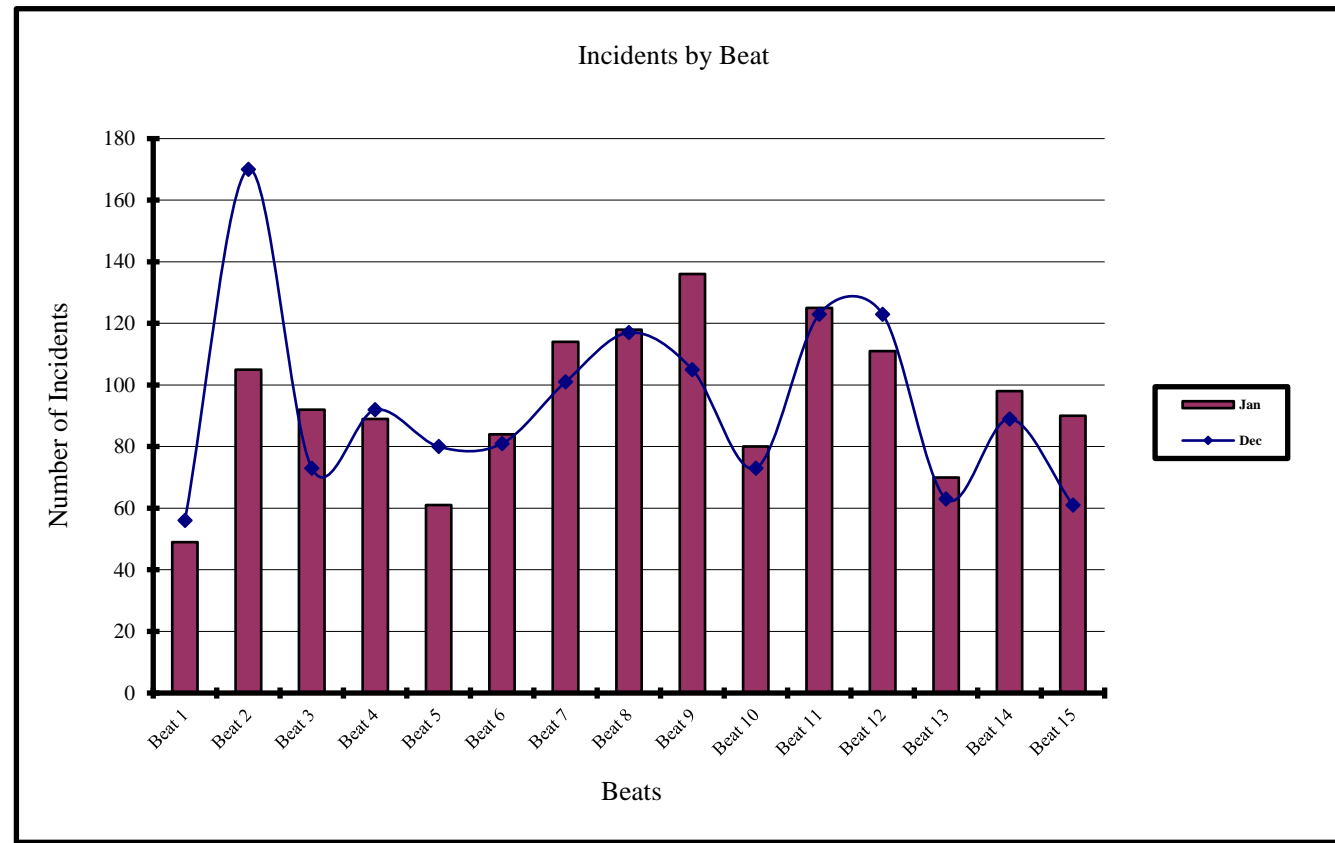
Hour of Day	Jan 2013	Dec 2012
0000 to 0100	89	67
0100 to 0200	52	49
0200 to 0300	54	40
0300 to 0400	43	42
0400 to 0500	33	20
0500 to 0600	19	7
0600 to 0700	28	37
0700 to 0800	44	24
0800 to 0900	57	59
0900 to 1000	76	50
1000 to 1100	62	46
1100 to 1200	65	54
1200 to 1300	59	70
1300 to 1400	63	53
1400 to 1500	47	63
1500 to 1600	62	74
1600 to 1700	84	97
1700 to 1800	72	84
1800 to 1900	86	70
1900 to 2000	63	77
2000 to 2100	71	86
2100 to 2200	59	84
2200 to 2300	85	77
2300 to 2400	49	79



Current and Previous Months Comparison of Incidents by Beat

Albany Police Department

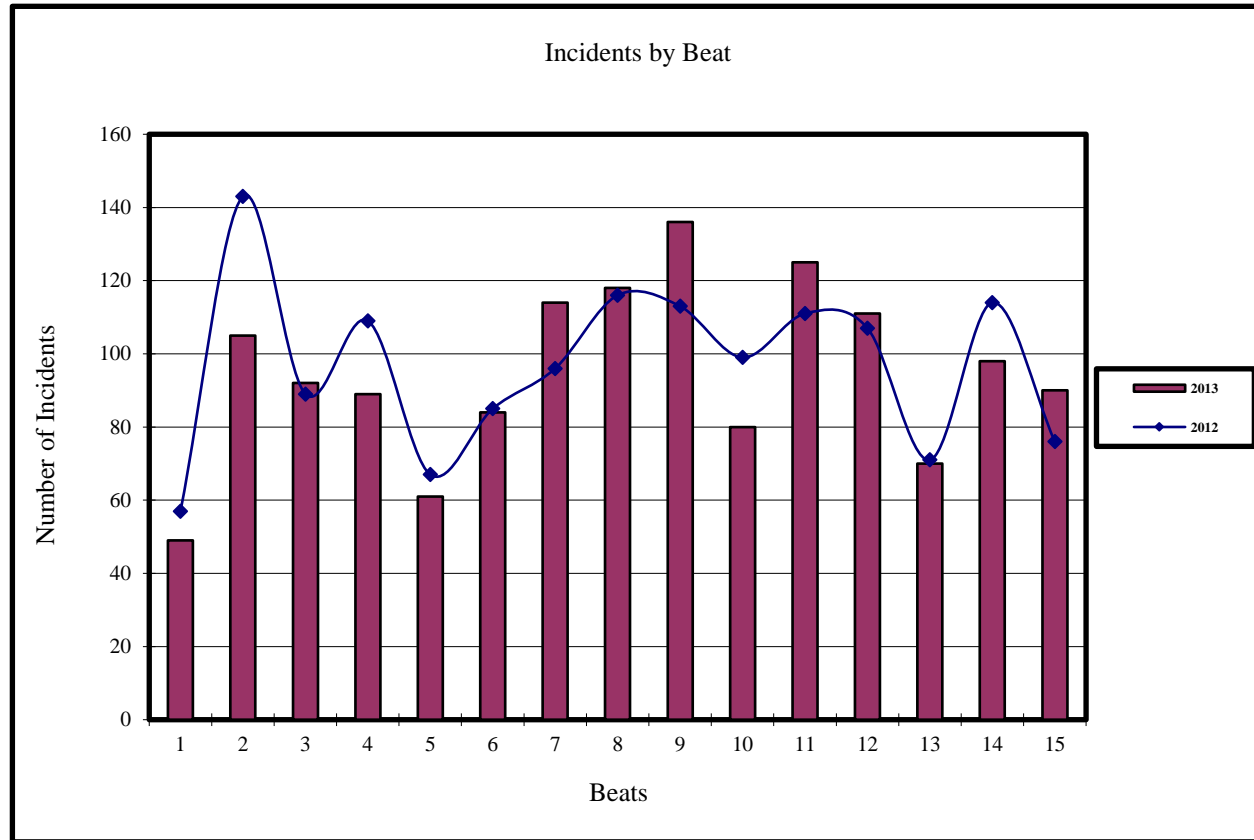
Beat	Incidents	
	Jan 2013	Dec 2012
Beat 1	49	56
Beat 2	105	170
Beat 3	92	73
Beat 4	89	92
Beat 5	61	80
Beat 6	84	81
Beat 7	114	101
Beat 8	118	117
Beat 9	136	105
Beat 10	80	73
Beat 11	125	123
Beat 12	111	123
Beat 13	70	63
Beat 14	98	89
Beat 15	90	61



Current and Previous Year Comparision of Incidents by Beat

Albany Police Department

Beat	Incidents	
	Jan 2013	Jan 2012
Beat 1	49	57
Beat 2	105	143
Beat 3	92	89
Beat 4	89	109
Beat 5	61	67
Beat 6	84	85
Beat 7	114	96
Beat 8	118	116
Beat 9	136	113
Beat 10	80	99
Beat 11	125	111
Beat 12	111	107
Beat 13	70	71
Beat 14	98	114
Beat 15	90	76



Current and Previous Month Comparison of Monthly Incidents by Day of Week Albany Police Department

Incidents		
Day	Jan 2013	Dec 2012
Sunday	156	220
Monday	181	196
Tuesday	245	170
Wednesday	192	182
Thursday	234	191
Friday	232	216
Saturday	182	234

